

International Shipping Method



In this article, Zikko is presenting you the commonly used shipping methods in international relocation world.

Table of Contents

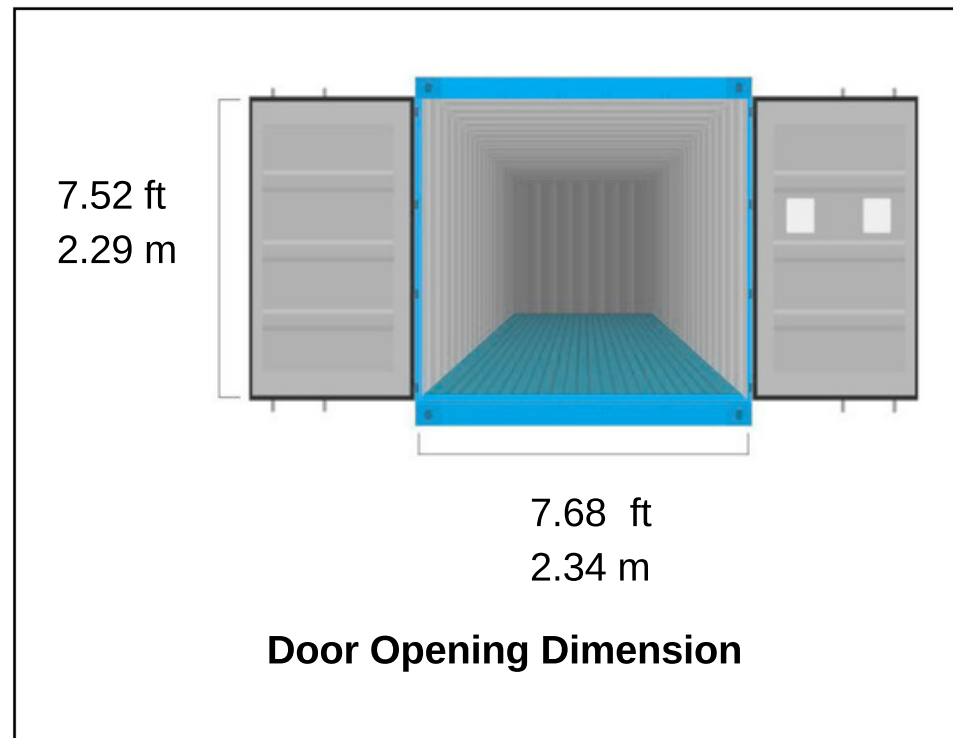
20-foot Container	2
40-foot Container	3
40-foot-high Container	4
LCL Shipment	5
Groupage Shipment	6
Air Shipment Containers	7

International Shipping Method



20-foot Container

- ◆ Commonly used in shipping
- ◆ It can contain a 2-bedrooms apartment of all common household goods and personal effects (3 family members)
- ◆ Loading capacity is about 30 cubic meters

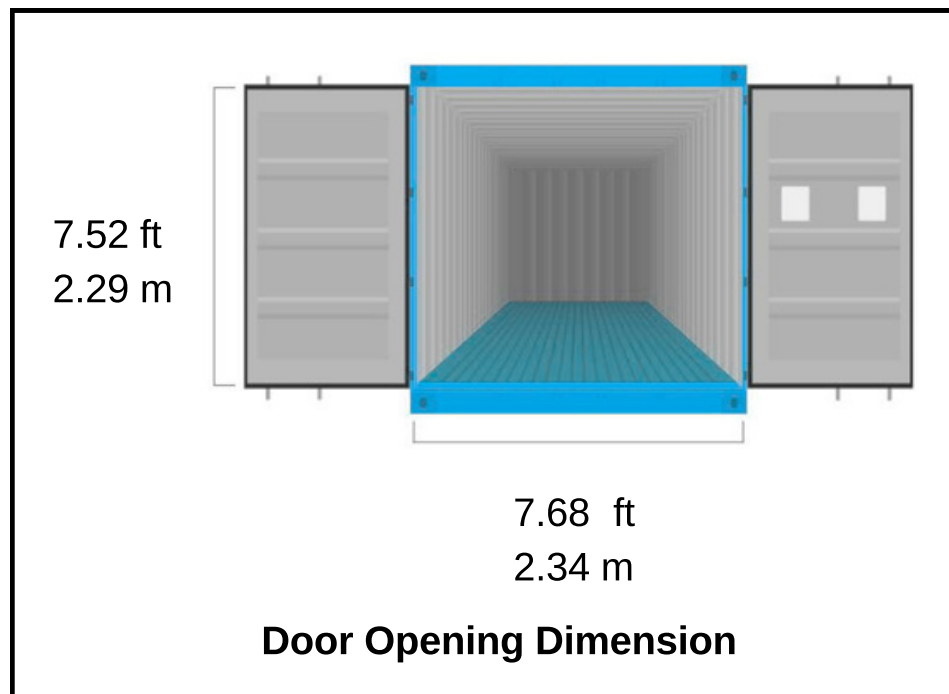


International Shipping Method



40-foot Container

- ◆ Very commonly used in shipping
- ◆ Twice long of one 20ft container
- ◆ It can contain a 5-bedrooms villa of all common household goods and personal effects (5 family members)
- ◆ Loading capacity is about 60 cubic meters

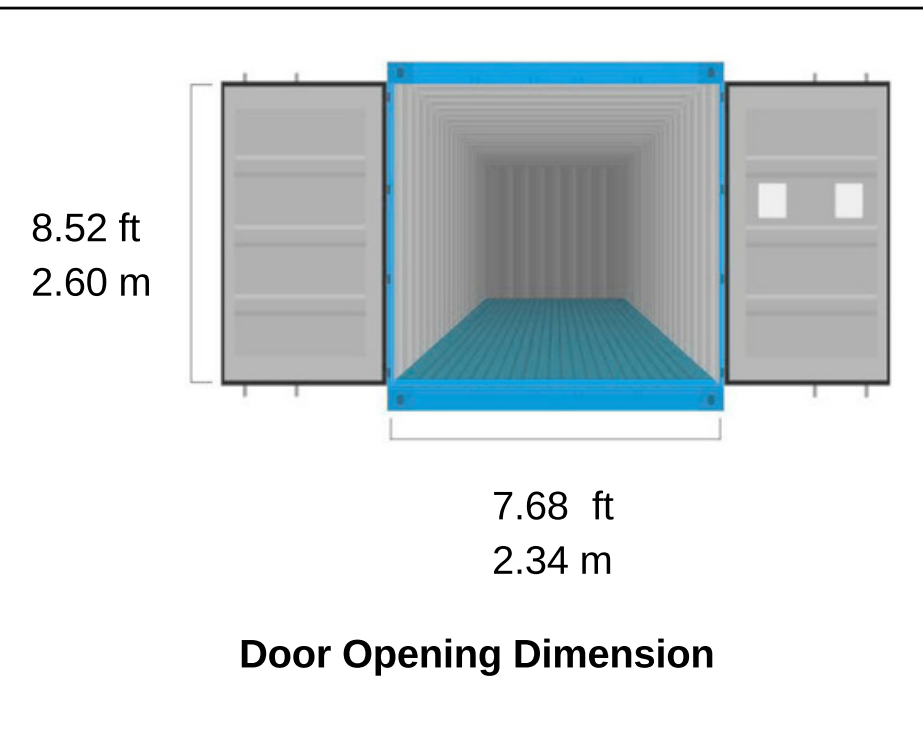


International Shipping Method



40-foot-high Container

- ◆ It is 1 foot higher than a 40ft container
- ◆ For most routes, expense is the same as 40ft
- ◆ Loading capacity is about 70 cubic meters



International Shipping Method



LCL Shipment

- ◆ LCL means "Less than Container Load"
- ◆ LCL concept is expressed as opposed to FCL(Full container load)
- ◆ A very small shipment should be consider LCL shipping method (usually less than 10 cubic meters)
- ◆ Zikko will book container space from the forwarder
- ◆ Your goods will be loaded in a customerized Lift Van or Ply-Wooden case then a container
- ◆ Your goods with Lift Van or Ply-Wooden case share the container with other merchandise
- ◆ A LCL shipping is usually more cost-effectivethan a solo container shipping
- ◆ Shipping freqency and transit time are as sameas container shipping

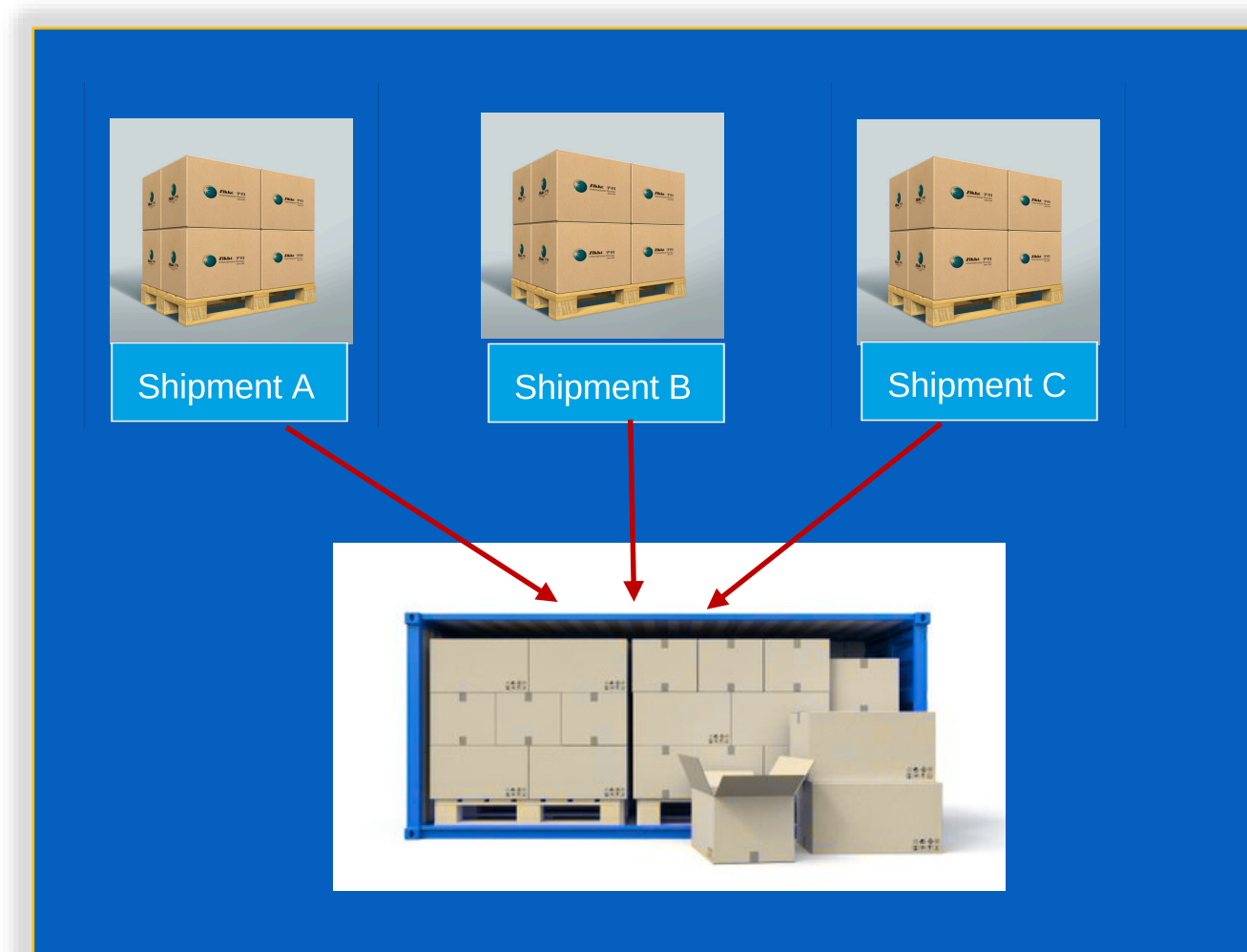


International Shipping Method



Groupage Shipment

- ◆ Groupage shipment looks like a LCL shipment
- ◆ But it has characters
 - Zikko will book the container and has the full control
 - Container will be stuffed with all household goods shipments
 - Shipments should be small (less than 10 cubic meters)
 - Shipments are to the same country
Container will not leave until it is fully filled
 - Transit time is much longer
 - Expense is more cost saving than LCL



International Shipping Method



Air Shipment Containers

- ◆ Loose Cargo (only cardboard carton) is allowed for air shipment
- ◆ But usually liftvan or Ply-wooden case for extend packing
- ◆ Air shipment is supposed to ship clothes and small possessions
- ◆ We limit furniture and bulky items as they might make air freight not affordable
- ◆ For most personal effects air freight, air chargeable weight = volume by cubic meter times 167

Reach out to Zikko if you have further enquiry
<mailto:info@zikko.com>

